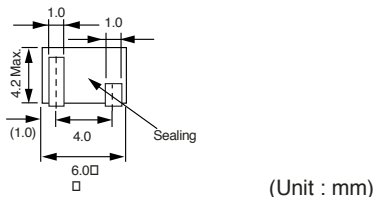
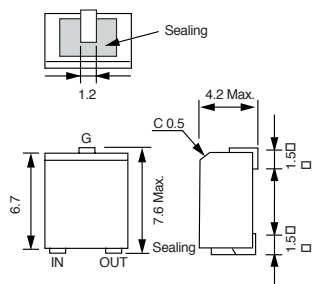


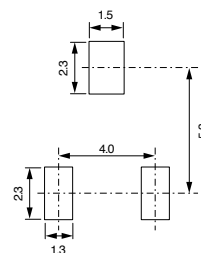
TYPE ELFC



(Unit : mm)

Standard pattern dimensions

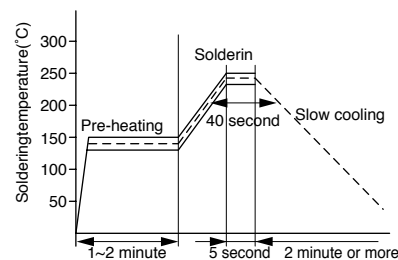
標準パターン寸法図



(Unit : mm)

Standard reflow soldering conditions

標準リフロソルダ条件



Description

- Ceramic ladder Filters for 455kHz band surface mounting.
- May be used in combination with Ceramic Discriminator to eliminate need for adjustment.

Features

- Bandwidth characteristics can be set to meet requirements, i.e..from $\pm 3\text{kHz}$ to $\pm 10\text{kHz}$.
- Possibility of use in IF stages ladder filters which require no adjustments.
- RoHS compliant

Applications

- Wireless communications equipment, Transceivers, and Equipment for Personal computer.
- Wireless data communications equipment (Remote Engine starter, Handheld companions).

概要

- 455kHz帯域^{つけ}4素子セラミックラダーフィルタ
- セラミックディスクリミネータとの組み合わせでIF段の無調整が可能

特長

- 帯域幅が用途に応じ自由に選択可能 ($\pm 3\text{kHz}$ ~ $\pm 10\text{kHz}$)
- IF段の無調整が可能
- RoHS 指令対応

用途

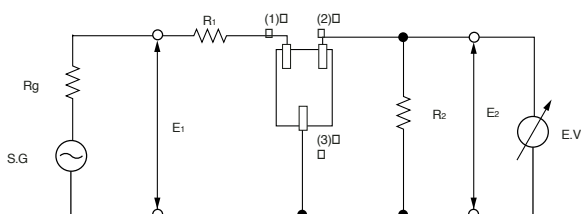
- 無線通信機、トランシーバ、PC周辺機器
- 無線応用機器 (エンジンスタター、携帯端末など)

SELECTION GUIDE FOR STANDARD FILTERS

TYPE ELFC

東光品番	6dB帯域幅	減衰帯域幅	保証減衰量	挿入損失	入出力インピーダンス
TOKO Part Number	6dB Band width (kHz)Min.	40dB Band width (kHz)Max.	Attenuation (dB)Min.	Insertion Loss (dB)Max.	Input/Output Impedance (Ω)
ELFC455D	± 10.0	± 20.0	27.0	4.0	1500
ELFC455E	± 7.5	± 15.0	27.0	4.0	1500
ELFC455F	± 6.0	± 12.5	27.0	4.0	1500
ELFC455G	± 4.5	± 10.0	27.0	4.0	1500
ELFC455H	± 3.0	± 9.0	25.0	4.0	1500

Test circuit 測定回路



Test conditions

1. $R_g + R_1 = R_2 = 1.5\text{k}\Omega$
2. Insertion loss (dB) = $20 \cdot \log(E_1/2 \cdot E_2)$
But E_1 : S.G open end output.

測定条件

1. $R_g + R_1 = R_2 = 1.5\text{k}\Omega$
2. 挿入損失 (dB) = $20 \cdot \log(E_1/2 \cdot E_2)$
但し、 E_1 : S.G開放端出力とする。