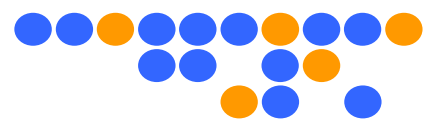
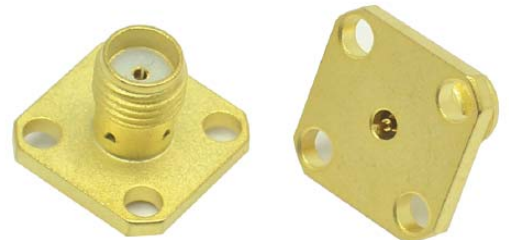


High Performance SMA Connector Data Sheet



■ Part No. : PSF-S00-000

(SMA 4-Hole Panel Mount Jack)

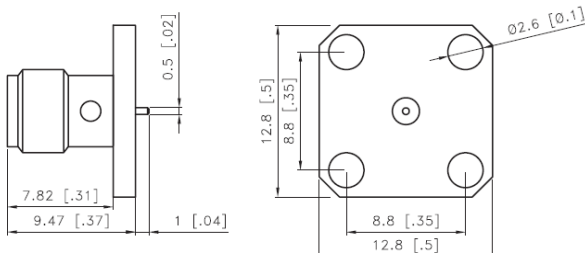


Technical Data

Electrical Data	Impedance	50 Ω
	Max. Frequency	26.5 GHz
	Insulation Resistance	Min. 5 GΩ
Mechanical Data	Force to Engage/Disengage	2.0 pounds max.
	Durability	500 mating cycles
	Recommended Mating Torque	7~10 inch-pounds
Environmental Data	Operating Temp.	-40°C~125°C
	Vibration	MIL-STD-202
	Shock	MIL-STD-202
	RoHS	Compliant

Material Data		Material	Surface Plating
	Center Contact	BeCu	Gold Plating on Ni
	Body	Brass	Gold Plating on Ni
	Insulator	PTFE	
	Captivation	Low Loss RESIN	

Outline Drawing



Unit : mm [inch]

Part Number

Part No.
(OLD P/N)

PSF-S00-000
(OLD: PSF-S00)