

MODELITHICS

Precision Measurements and Models You Trust

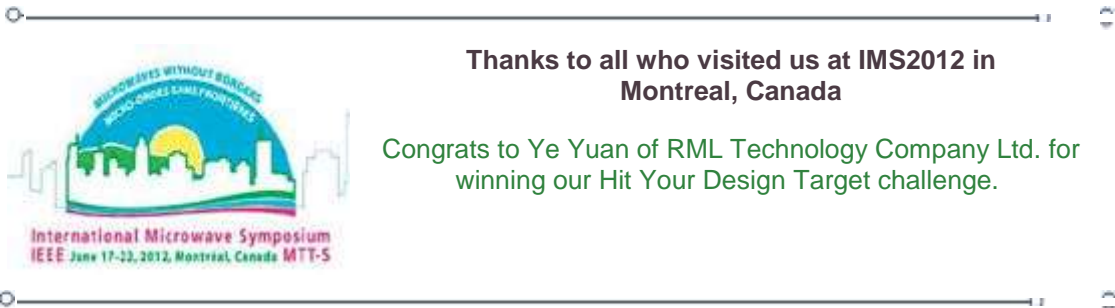


3rd Quarter Newsletter—2012

What Designers are saying:

I do a lot of RF tuning simulation in the 2-3GHz range, use the Modelithics CLR models right out of the box, and have had impressive success. We have already been able to use the results to help customers, including major wireless component suppliers, develop a systematic method of solving difficult multi-band matching problems. They in turn are quite pleased. When I spend more time with the user manual and application notes, I suspect the results will be even more amazing!

Don Lee, Staff Engineer, Advantest



New Product Release! **Modelithics Library for AWR v9.3**



[Modelithics Added Over Fifty Models to the Modelithics COMPLETE Library for AWR Microwave Office](#)

The new content represents over 1000 additional individual components with new models. The Modelithics COMPLETE Library now represents over 7500 commercially available active and passive microwave components!

[AWR v9.3 Release Notes](#)

Click [here](#) to check out the list of components available or request a [FREE Trial](#).

Coming soon!
New Product Release for Agilent Genesys

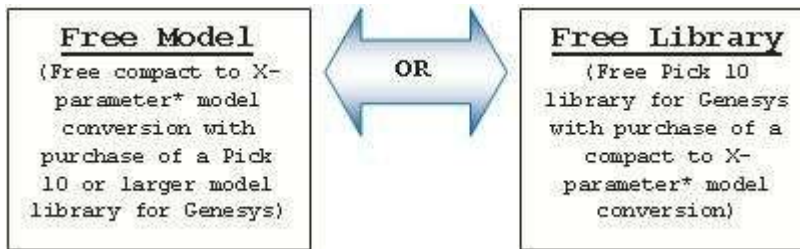


In development for a Q4' 2012 release is the next version of Modelithics COMPETE Library for Agilent Genesys software. Plans for this release will be to bring the CLR Library (RLC models) as well as the NLD Library (nonlinear diode models) to be in full parity with the NLD Library for Agilent ADS, while adding more transistor and system level component models to the NLT and SLC



Note: As a reminder, Modelithics can port any available ADS model to Genesys on-demand with our [compact to * X-parameter model conversion service](#).

Genesys Special Offer!



New Promotions:

Modelithics expands its *Pre-Release Program*

The Pre-Release program now includes components that are at various stages of development and are eligible to be included in a purchased Modelithics Library at a discount. In some cases Modelithics has chosen to conduct initial measurements and retain data for offering future library models based on demand. In others, Modelithics may have complete Global Models or non-linear models in library format that are already in the queue for the next library release. Either way, *Pre-Release* devices represent a short cycle-time, low-cost way of expanding your library to include devices critical to your design. [Click here to see a complete list of current Pre-Release components.](#)

Newly Added Pre-Release Models:

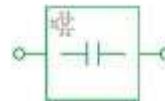
Murata
LQG15H RF Chip
Inductors



Coilcraft
0806/0807/0908SQ
Square Air Core
Inductors



Johanson
R03S
Chip Capacitors



For more information, contact sales@modelithics.com.

Recent Articles

Below highlights printed articles you may have missed in industry related magazines.

[Substrate Library Adds Accuracy and Convenience to Board-Based Designs](#) as published by RFTI Magazine
Described is Modelithics' Substrate Library for AWR's Microwave Office that provides access to accurate, scalable materials definitions

[Advances in Linear And Non-Linear Modeling For Improved Microwave Design](#) as published in IEEE WAMICON 2012 Digest.
*This two part paper addresses advances in combined EM/parasitic model co-simulations for passive SMT devices as well as non-linear *X-parameter modeling for active devices.*

[Ultra-Wideband Nonlinear Modeling of W-Band Schottky Diodes](#) as published in Microwave Journal.
This paper highlights W-Band Schottky diode validation against multiple measurement datasets including S-parameter and temperature conditions.

Recent Presentations:

Below highlights presentations from recent industry events such as IEEE IMS and IEEE Wamicon 2012.

[Advances in Linear and Non-Linear Modeling For Improved Microwave Design](#) (as presented at IEEE WAMICON 2012, Companion presentation to paper mentioned above)

[Power Amplifier Design with *X-parameter Power Transistor Models \(Agilent sponsored webcast delivered September 6, 2012 \)](#)
Efficient power amplifier design flows for are explained that use both compact and *X-parameter models in Agilent Genesys and ADS.

[SMD Models That Really Work](#) (as presented in Sonnet Booth at IEEE IMS2012)

[An Intuitive Web-based ADC Performance Analysis Tool](#) (as presented at IEEE IMS2012 MicroApps) A web-based Analog-Digital-Converter (ADC) analysis tool is presented which provides an intuitive illustration of ADC performance.

[Improve Microwave Circuit Design Flow Through Passive Model Yield And Sensitivity Analysis](#) (as presented at IEEE IMS2012 MicroApps) An improved design flow is explained for efficient filter and matching circuit design success that accounts for component and PCB board tolerances.

New Application Notes:

The latest instruction papers to obtain the most out of our library is highlighted below with simulation examples.

AN43: [Modelithics Substrate Library for Genesys Adds Accuracy and Convenience to Board-Based Designs](#)

With Genesys Example

AN44: [Modelithics Substrate Library for Agilent's Advanced Design System \(ADS\) Adds Accuracy and Convenience to Board-Based Designs](#)

With ADS Example

AN45: [Simulation Procedures For Successful Low Noise Amplifier Design](#)

* X-parameters is a registered trademark of Agilent Technologies.



To discontinue your subscription to **Modelithics News**, please [click here](#).
Questions or comments? E-mail us at support@modelithics.com or call 888.359.6359

www.Modelithics.com